

SOFTBANK APN PROFILE CONFIGURATION

iPhone

Before configuring the APN profile, connect iPhone to WiFi in device settings.

APN

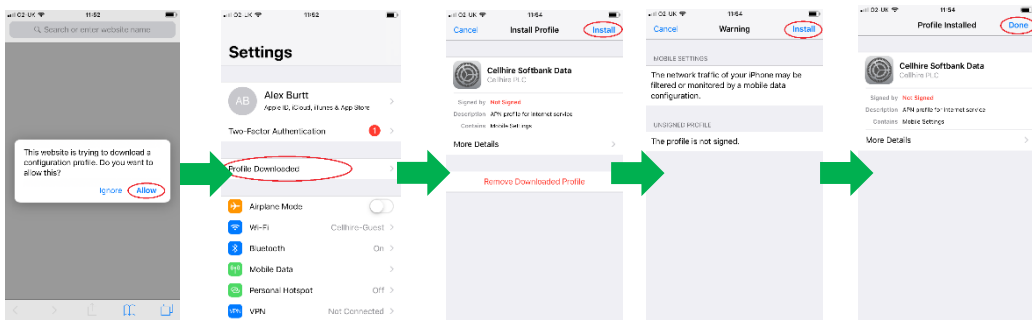
To configure an iPhone to work with a Cellhire Japan SIM from SoftBank, follow the below instructions.

Important:

When finished with the Cellhire Japan SIM card, you must remove the configuration profile in order for data to work with your original SIM card/network provider.

Install Profile

1. Connect iPhone to WiFi.
2. Open web browser to www.cellhire.com/softbankapn or use the QR code.
3. Follow the instructions on screen to allow and install configuration profile (note – you may be prompted to enter your iPhone PIN code to proceed).



Remove Profile

1. Open iPhone Settings menu and go to General.
2. Scroll down to Profile and click on **Cellhire SoftBank Data**.
3. Tap Remove Profile and follow the on-screen instructions (note – you may need to enter iPhone pin code to proceed).

