

# ZTE Mifi Setup

1. Insert a sim into the mifi and then connect via wifi or a USB cable if that is an option (USB option may need assistance from techsupport).
2. **If connecting via wifi:** Open a web browser and try connecting to one of the below URL's **<http://192.168.0.1>** or **<http://uf.ztedevice.com>**. You can add this link as a favorite/bookmark, then click the link when connecting to other ZTE mifi's moving forward.
3. **If connecting via USB:** You may be asked to install drivers (tech support may need to assist with this). If the drivers are installed you may get a network prompt to confirm, open a web browser and try connecting to one of the below URL's **<http://192.168.0.1>** or **<http://uf.ztedevice.com>**. You may also have a new icon on your desktop, this can be clicked to access the dashboard (example below).



4. At the login screen type in the password below:

admin (All lowercase)

A screenshot of a web browser showing a login page. The page has a blue header with 'PC | Mobile' in white. Below the header is a white login box. Inside the box, there's a red rectangular border around a 'Password' input field and a blue 'Login' button. Below the input field is a checkbox labeled 'Display Password'.

5. At the dashboard screen, click on 'Settings'

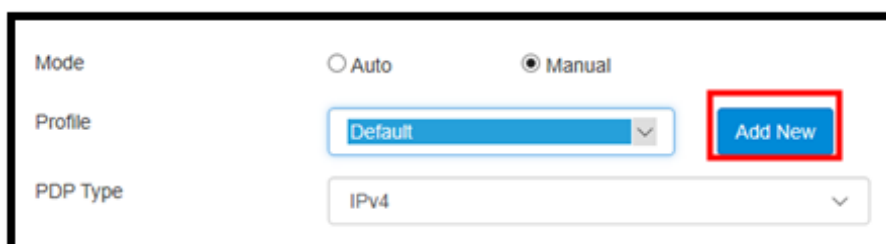


6. Click on the arrow to the right of 'APN'.



7. To setup our APN click on 'Manual'

8. Then click on 'Add New'

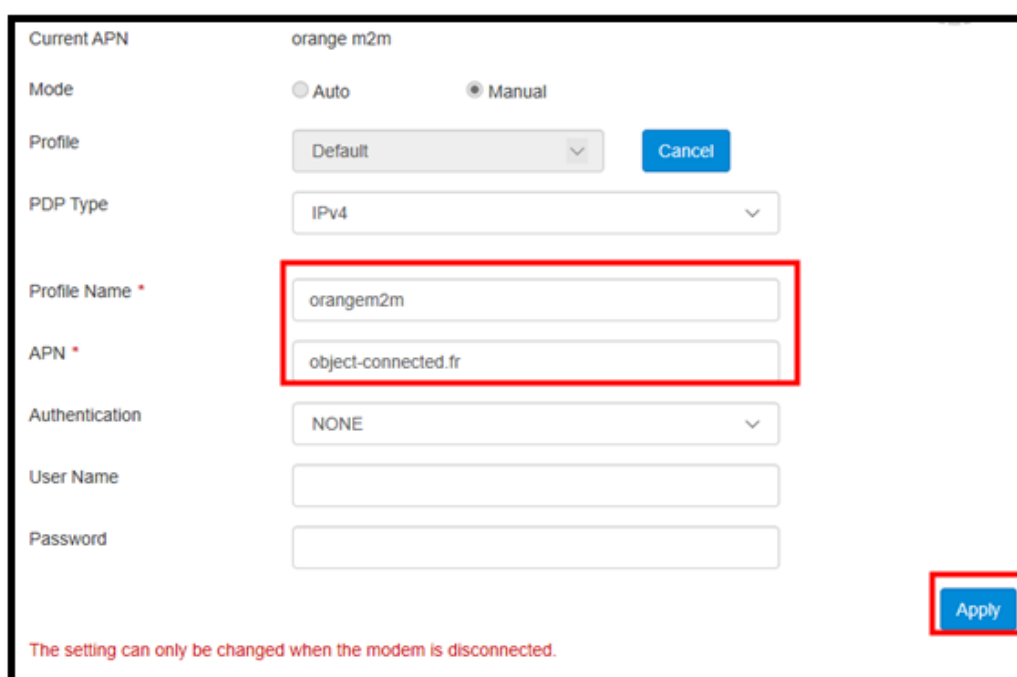


Mode ☐ Auto ☒ Manual

Profile Default Add New

PDP Type IPv4

9. Type in the Profile Name and APN, then click on 'Apply' and then 'Set as default' after the page updates.



Current APN orange m2m

Mode ☐ Auto ☒ Manual

Profile Default Cancel

PDP Type IPv4

Profile Name \* orangem2m

APN \* object-connected.fr

Authentication NONE

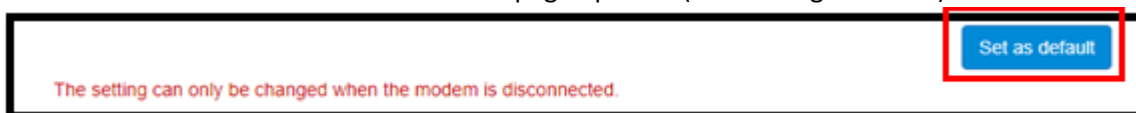
User Name

Password

Apply

The setting can only be changed when the modem is disconnected.

10. Make sure to click 'Set as default' after the page updates (Bottom Right Corner).



Set as default

The setting can only be changed when the modem is disconnected.

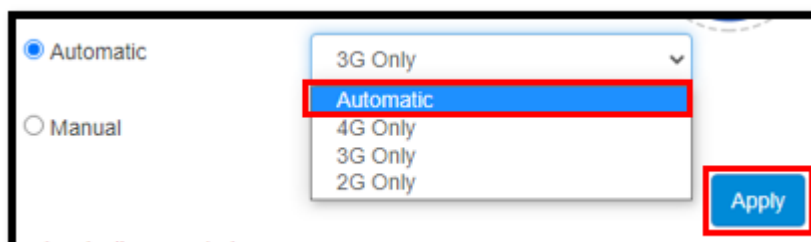
11. Click on the ZTE logo in the top left to go back to the dashboard.



12. Click on Settings, then click the “Network Selection” arrow.



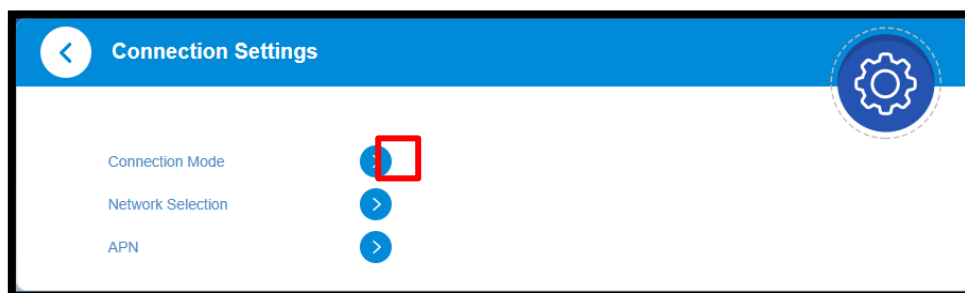
13. At the next screen, make sure Network Selection is set to “Automatic”.



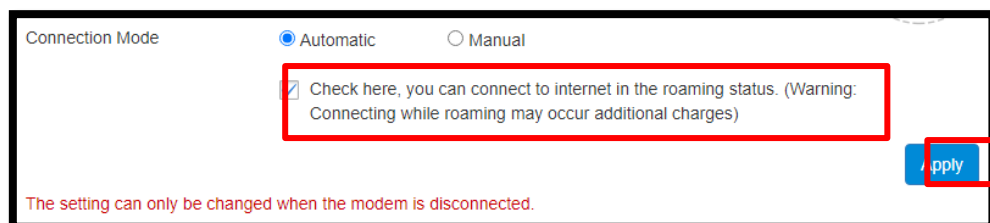
14. Once done click the Apply button, then once again click the ZTE logo in the top left corner.



15. Click on Settings, then click the “Connection Mode” arrow.



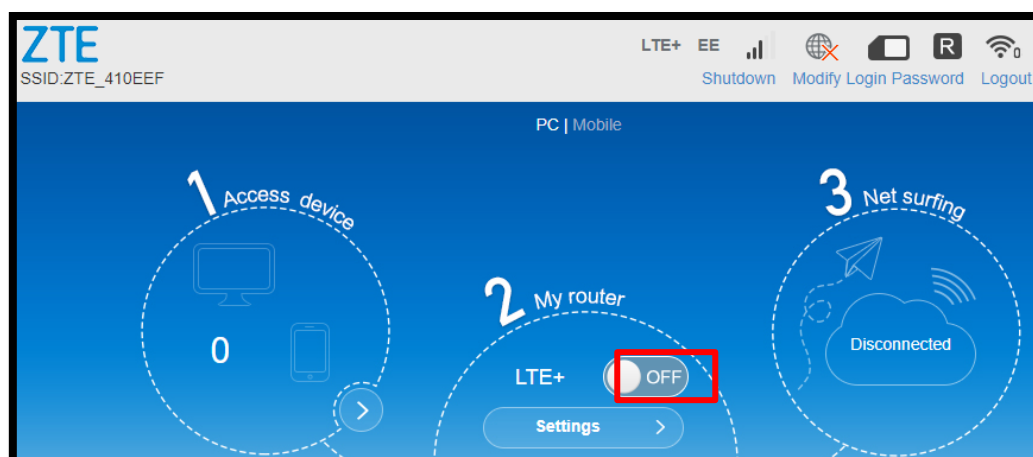
16. At the next screen, tick the checkbox and ensure connection mode is “Automatic”. Tick the checkbox to enable roaming.



Once done click the Apply button, then once again click the ZTE logo in the top left corner.



17. At the dashboard, click the 'Off/On button' to activate data.





18. To test you can try load a webpage in another browser or another tab, you should see activity on the sim like shown below. Alternatively you can disable your wifi if you are unsure.



19. Lastly you can logout of the device using the logout option in the top right and disconnect the mifi device.

