

DOCOMO APN PROFILE CONFIGURATION

iPhone

Before configuring the APN profile, connect iPhone to WiFi in device settings.

APN

To configure an iPhone to work with a Cellhire Japan SIM from DOCOMO, follow the below instructions.

Important:

When finished with the Cellhire Japan SIM card, you must remove the configuration profile in order for data to work with your original SIM card/network provider.

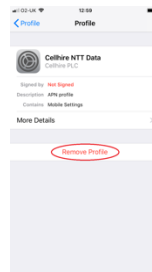
Install APN Profile

1. Connect iPhone to WiFi.
2. Open web browser to www.cellhire.com/nttmapn or use the QR code.
3. Follow the instructions on screen to allow and install configuration profile (note – you may be prompted to enter your iPhone PIN code to proceed).

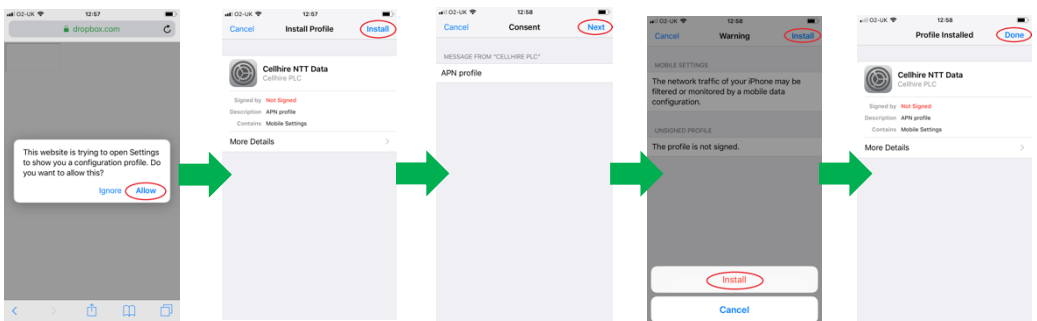


Remove Profile

1. Open iPhone Settings menu and go to General.
2. Scroll down to Profile and click on **Cellhire NTT DOCOMO**.
3. Tap Remove Profile and follow the on-screen instructions (note – you may need to enter iPhone pin code to proceed).



Install APN Configuration Profile



Android

APN

To configure an Android to work with a Cellhire Japan SIM from DOCOMO, follow the below instructions.

The exact menu options may differ depending on your Android device. You may need to consult your phone's original user guide for exact instructions. The below instructions are based on a Samsung J5.

Install Profile

1. Open main Settings Menu.
2. Scroll down and tap Connections.
3. Tap on Mobile Networks and then Tap on Access Point Names (APN).
4. Tap New or Add to create a new APN profile.
5. Enter the following details
Name: Cellhire JP
APN: mmtcom.jp
Username: c@jp
Password: cjp
Authentication Type: CHAP or PAP
APN Type: default
6. Make sure to save changes before exiting.

CH-5077b
Issue 04 – 02/21

Install Profile

